

Specialty Growth Hormone Medications at CHOC

Skytrofa® (lonapegsomatropin-tcgd) Weekly Injection

[Click Here for Additional Patient Information](#)



IMPORTANT: The injection must happen within **2** hours of preparing the Skytrofa. If not, the cartridge will be unusable and will need to start over with a brand-new cartridge.

Do not use or place the auto-injector closer than 12 inches (30 cm) to microwave ovens or electronic equipment with antennas such as mobile phones and WiFi transceivers

How to Prepare Your Skytrofa:

1. Remove the cartridge from the packaging. To attach a new needle, take a disposable needle and remove the seal.
2. Firmly press the newly exposed needle onto the cartridge holder end of the pen and screw it into the cartridge until the needle will not turn anymore.

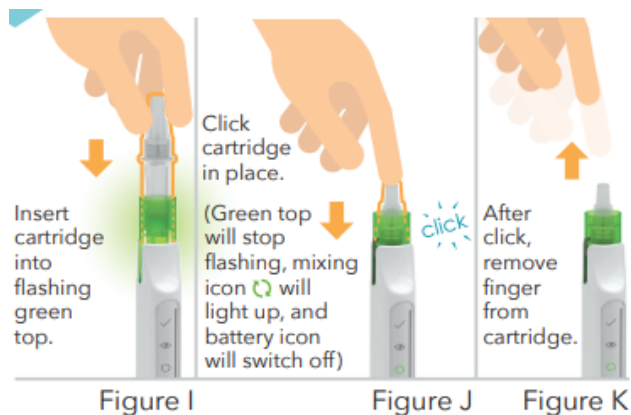


3. Prep the auto-injector. If it is charging, disconnect it from the charger because it cannot be used when connected to the charger.
4. Remove the protective cover and place the auto-injector upright on a flat surface.

5. Turn on the auto-injector by pressing and releasing the green button.



6. Once on, insert the cartridge by pushing straight down WITH the



needle cover still on.

7. If you cannot insert the cartridge, check if an orange plug is still attached to the cartridge. If an orange plug is still attached to the cartridge, remove it by pulling it straight off (see figure below). The



An orange plug may need to be removed from the cartridge.

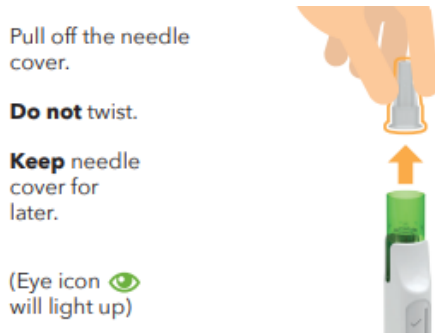
8. Wait 4-8 minutes to allow the auto-injector to mix the medicine. You will hear a steady ticking during mixing. Make sure it is upright and still during mixing—if not, the mixing will pause.
9. Two loud beeps and a flashing progress bar will let you know that the medication is done mixing.
10. Turn the auto-injector up and down gently to mix the medication by hand, which will be monitored by the device. Once you complete

5-10 correct turns, 2 loud beeps and a progress bar will signal that it is done.

11. Place the auto-injector upright again for automatic air removal until you hear 2 loud beeps.

How to Give Your Dose:

1. Wash your hands with soap and water.
2. Clean the skin at and around the injection site.
 - a. Stomach (avoid 2 inches around the navel)
 - b. Thighs
 - c. Buttocks
3. Pull off the needle cover

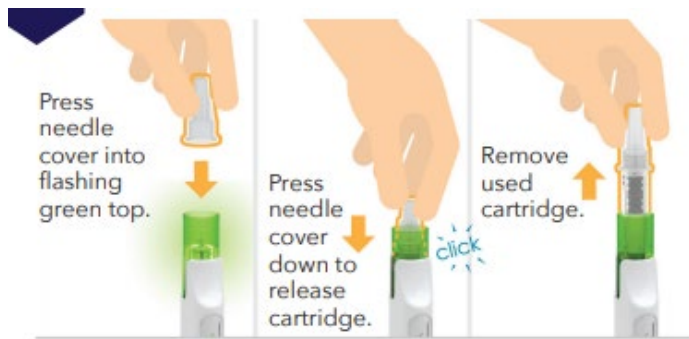


4. Check the window to see if the medication is okay to inject. Do not inject if there are visible particles or if it is not clear and colorless.
5. Press and hold the green top against the skin of the injection site at a 90 degree angle, hold for 10-15 sec until you hear 2 loud beeps AND



the green top flashes 2 times. The green checkmark will light up.

6. Do not remove the auto-injector before the injection is complete auto-injector makes a buzzing sound as it unlocks the cartridge. Wait until you hear 2 loud beeps, and the green top starts to flash.



7. Press the needle cover back on when the green top flashes
8. Press the needle cartridge down to release the cartridge but do **not** twist the cartridge.
9. Dispose of the cartridge and needle into a sharps container.

Additional Resources:

Hormone Health Network
1-800-HORMONE
(1-800-467-6663)
hormone.org

Human Growth Foundation
1-800-451-6434
hgfound.org

The Magic Foundation
1-800-362-4423
magicfoundation.org