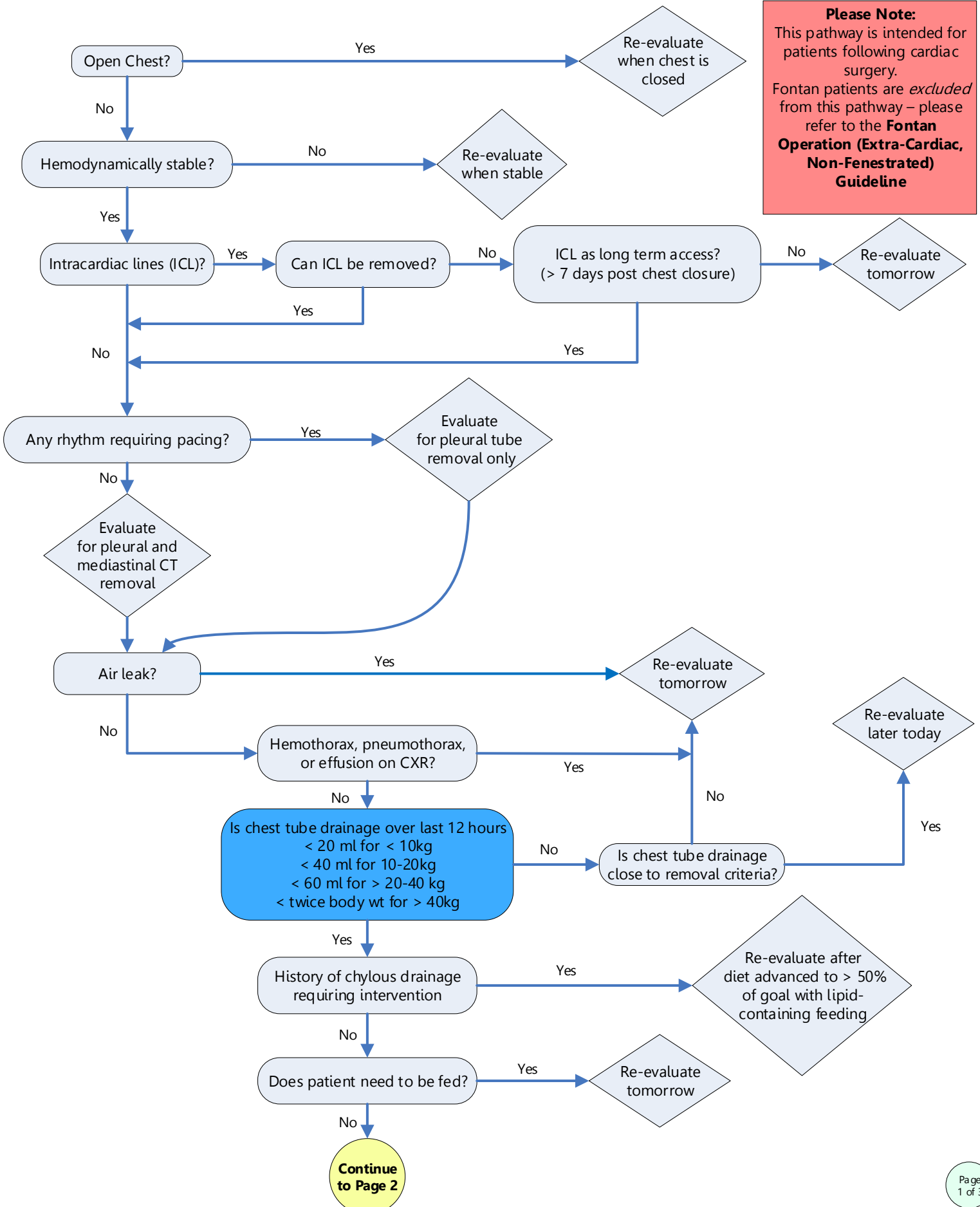


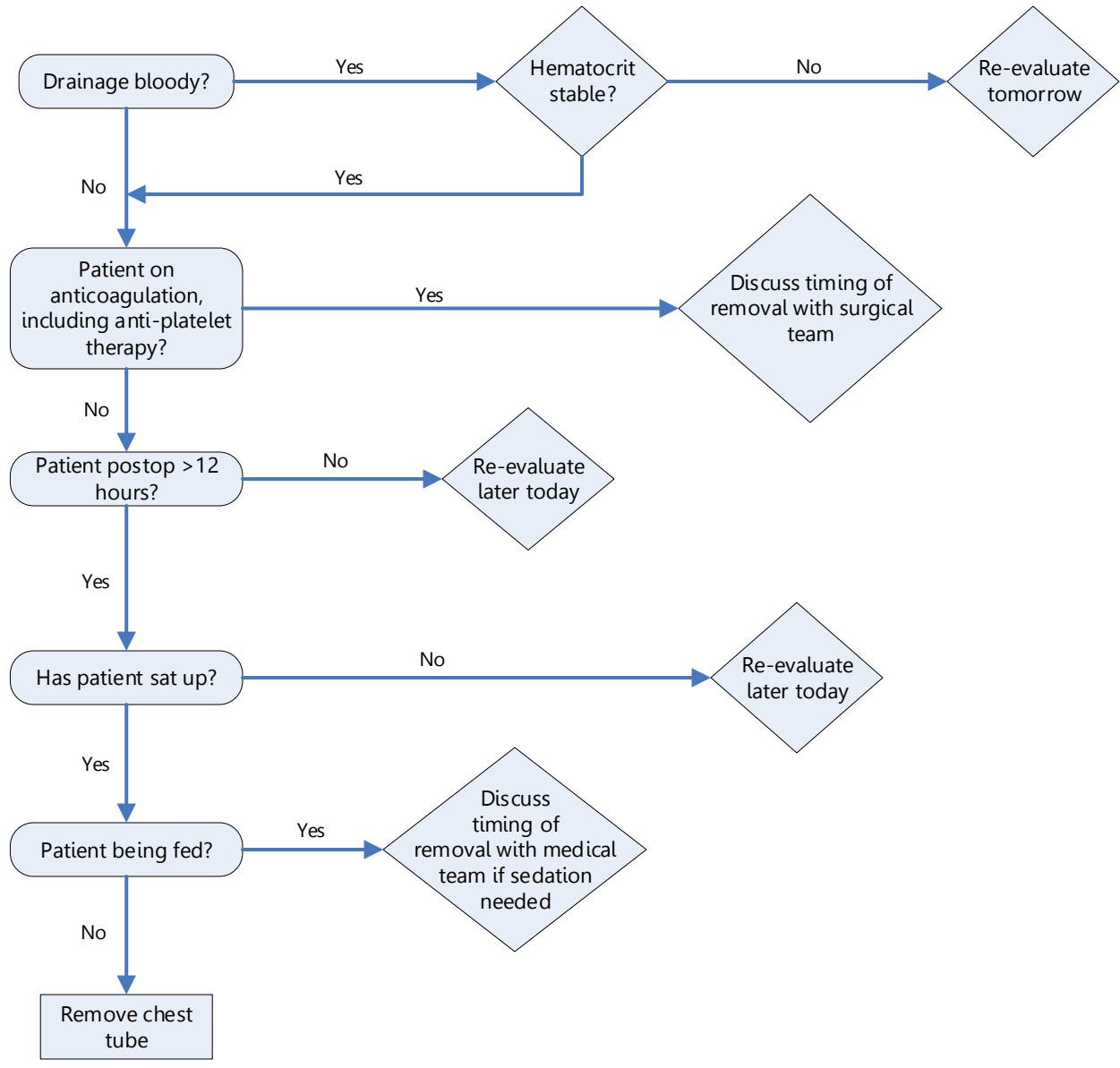
CVICU Postoperative Chest Tube Removal Algorithm

Please Note:
 This pathway is intended for patients following cardiac surgery. Fontan patients are *excluded* from this pathway – please refer to the **Fontan Operation (Extra-Cardiac, Non-Fenestrated) Guideline**



Continue to Page 2

Continued from Page 1



Chest Tube Removal Algorithm

References

- Bates, K. E., Madsen, N. L., Khadr, L., Gao, Z., Crawford, K., Gaies, M., . . . Kipps, A. K. (2020). Center variation in chest tube duration and length of stay after congenital heart surgery. *Ann Thorac Surg, 110*, 221-227. <https://doi.org/10.1016/j.athoracsur.2019.09.078> (**Level V**)
- Bertrandt, R. A., Saudek, D. M., Scott, J. P., Madrzak, M., Miranda, M. B., Ghanayem, N. S., & Woods, R. K. (2019). Chest tube removal algorithm is associated with decreased chest tube duration in pediatric cardiac surgical patients. *J Thorac Cardiovasc Surg, 158*(4), 1209-1217. <https://doi.org/10.1016/j.jtcvs.2019.03.120> (**Level IV**)